



Available Now!

\$342,990

From \$3,143\*/month

909 Lost Mine Trail

Sendero at Bentsen Palm

Homesite 33

Est. Completion Date: Available MAY/JUN 2025



3,526

TOTAL SQUARE FEET

3,037

LIVING SQUARE FEET

5

BEDROOMS

3.5

BATHS

2

CAR GARAGE

2.0

STORIES

Call or Text 956-275-8069 or visit our Sales Office Monday - Saturday: 9:30am to 6:30pm  
Sunday: 12pm to 6 pm for more info!

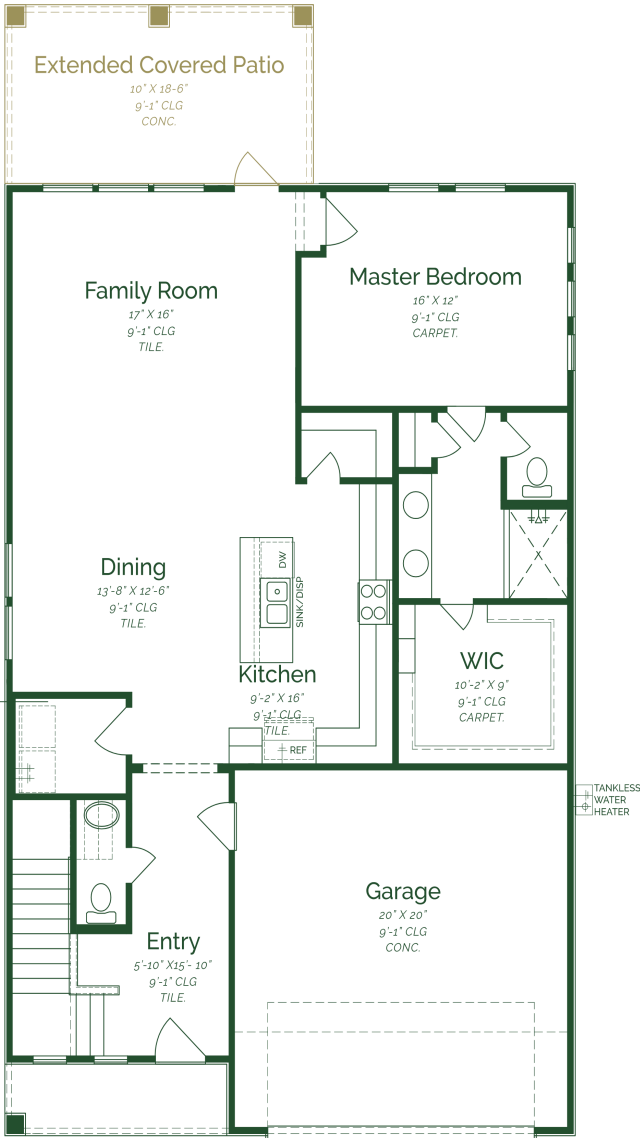
Upon entering the home, you're greeted by an inviting open concept dining, family room, and kitchen. The kitchen boasts, stained ash wood cabinets, granite countertops, and GE stainless steel appliances. Convinetly tucked away on the main floor, is a powder room for both residents and guests. The primary bedroom offers a spacious layout, dual sinks, and a large walk-in closet. Ascending the staircase to the second floor, you'll discover four bedrooms, two full baths, and a large game room.

- Extended covered patio
- Granite countertops
- GE stainless steel appliances- Gas
- Driftwood flooring throughout home

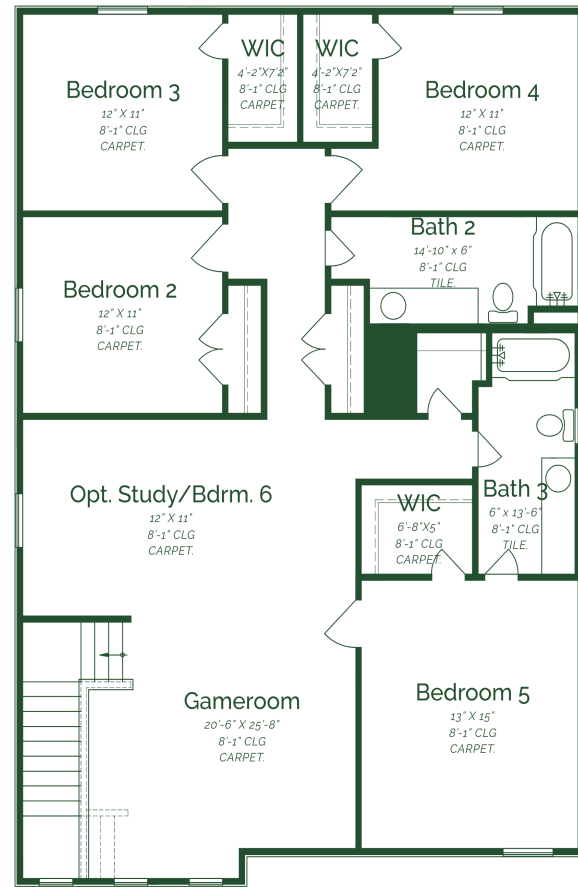
\*Photos do not represent the final production of the home



# Magnolia



FIRST FLOOR



SECOND FLOOR