



Available Now!
\$290,990
 From \$2,235.59*/month

816 S. Templo Dorado
 Sendero at Bentsen Palm
 Homesite 89

Est. Completion Date: Available MAY/JUN 2025



2,368	1,843	4	3.5	2	2.0
TOTAL SQUARE FEET	LIVING SQUARE FEET	BEDROOMS	BATHS	CAR GARAGE	STORIES

Call or Text 956-275-8069 or visit our Sales Office Monday - Saturday: 9:30am to 6:30pm
 Sunday: 12pm to 6 pm for more info!

Welcome to a charming two-story home that effortlessly combines modern comfort with classic elegance. Upon entering the home, the open concept living space seamlessly integrates the family room, dining, and kitchen. The kitchen is a chef's delight, boasting upgraded painted pure white maple wood cabinets, Granite countertops, and GE stainless steel appliances. Conveniently tucked away on the main floor is a powder room, for both residents and guests. Ascending the staircase to the second floor, you'll discover three well-appointed bedrooms and shared full bathroom.

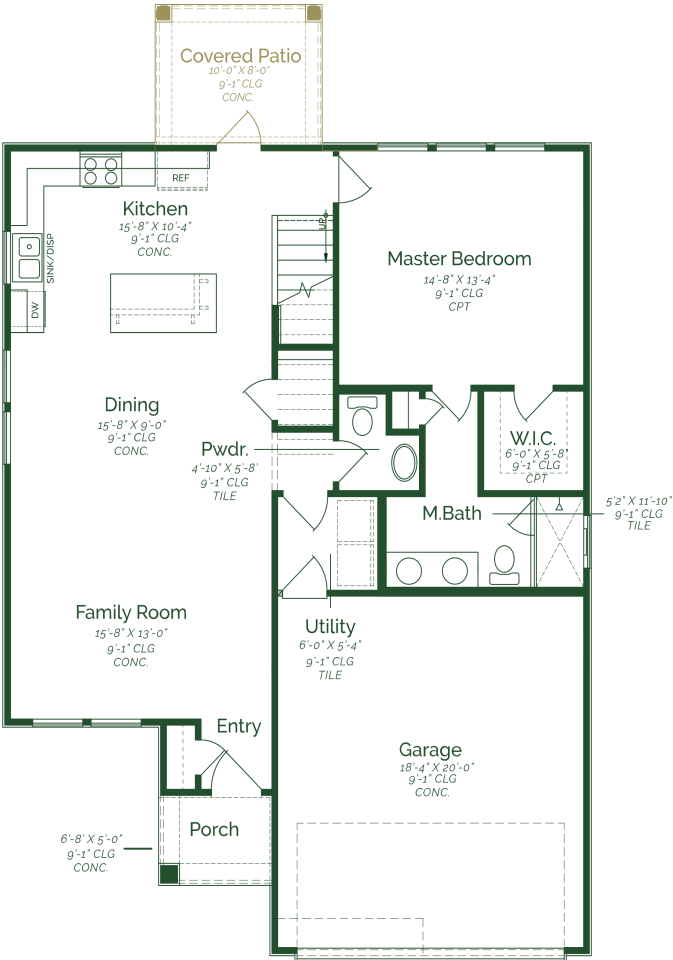
- Covered patio
- Maple wood cabinets
- Granite countertops
- Tile flooring throughout home

*Photos do not represent the final production of the home

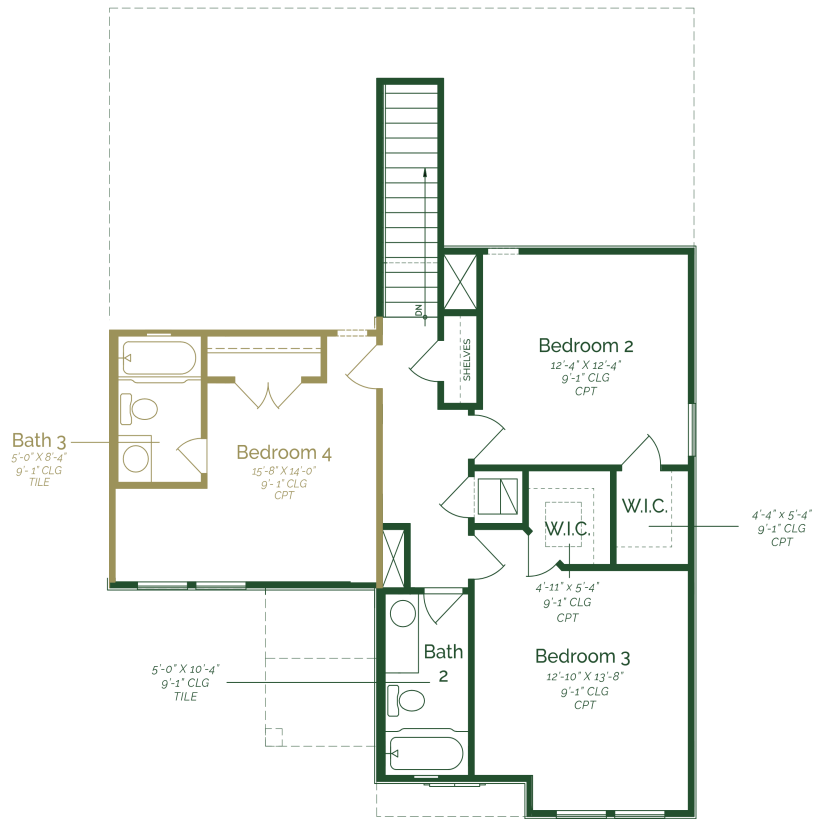
The information provided in this document regarding available quick move-in homes at Esperanza Homes is intended for informational purposes only. While we strive to present accurate and up-to-date information, all details—including but not limited to pricing, availability, home features, and community amenities—are not guaranteed and are subject to change without prior notice. Dimensions and floor plans are approximate and may differ from the actual homes. Incentives and promotional offers are valid only when financing through Stonewood Home Lending and are subject to specific terms and conditions and may be limited to select homes and communities. For comprehensive terms, conditions, and further information regarding our homes and offerings, please consult with an Esperanza Homes sales consultant or visit esperanzahomes.com.



Acuna II



FIRST FLOOR



SECOND FLOOR