



Available Now!
\$363,990
From \$2,997.45*/month

1006 S Tecate Dr
Sendero at Bentsen Palm
Homesite 200

Est. Completion Date: Available FEB/MAR 2025



3,510	2,937	5	3.5	2	2.0
TOTAL SQUARE FEET	LIVING SQUARE FEET	BEDROOMS	BATHS	CAR GARAGE	STORIES

Call or Text 956-275-8069 or visit our Sales Office Monday - Saturday: 9:30am to 6:30pm
Sunday: 12pm to 6 pm for more info!

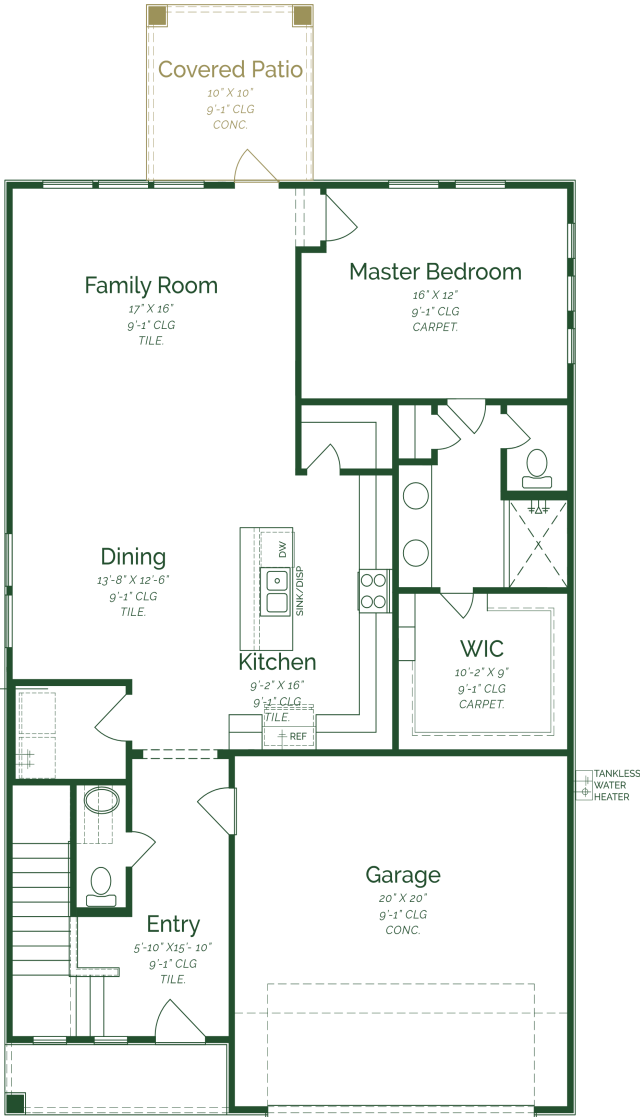
Upon entering the home, you're greeted by an inviting open concept dining, family room, and kitchen. The kitchen boasts ash wood stained cabinets, granite countertops, and GE stainless steel appliances. Conveniently tucked away on the main floor, is a powder room for both residents and guests. The primary bedroom offers a spacious layout, dual sinks, and a large walk-in closet. Ascending the staircase to the second floor, you'll discover four bedrooms, two full baths, and a large game room.

- Covered patio
- Stainless steel appliances- Gas
- Granite countertops
- Game room

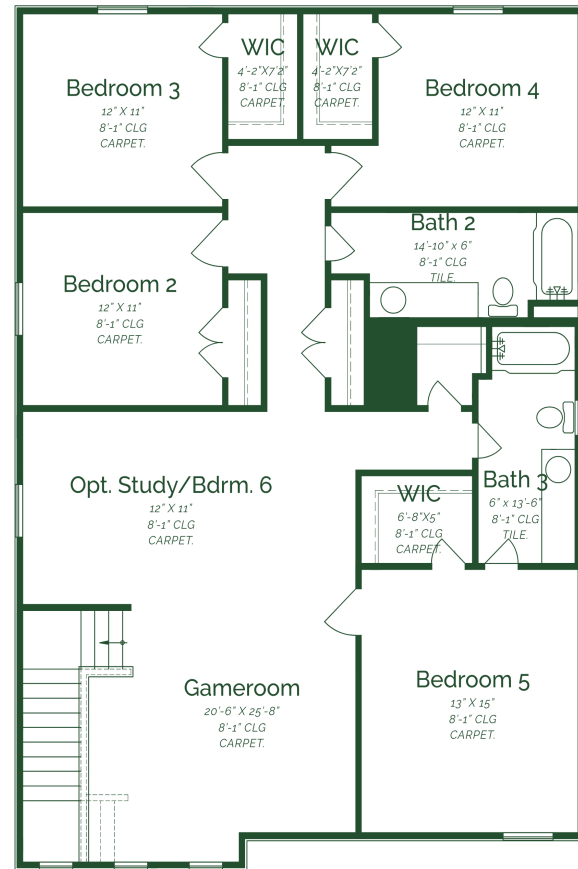
*Photos do not represent the final production of the home



Magnolia



FIRST FLOOR



SECOND FLOOR