



Available Now!
\$209,990
 From \$1,652*/month

5740 St Dominic Dr
 Wolf Creek
 Homesite 23

Est. Completion Date: Available MAY/JUN 2025



1,334	1,304	3	2	1.0
TOTAL SQUARE FEET	LIVING SQUARE FEET	BEDROOMS	BATHS	STORIES

Call or Text 956-275-8069 or visit our Sales Office Monday - Saturday: 9:30am to 6:30pm Sunday: 12pm to 6pm for more info!

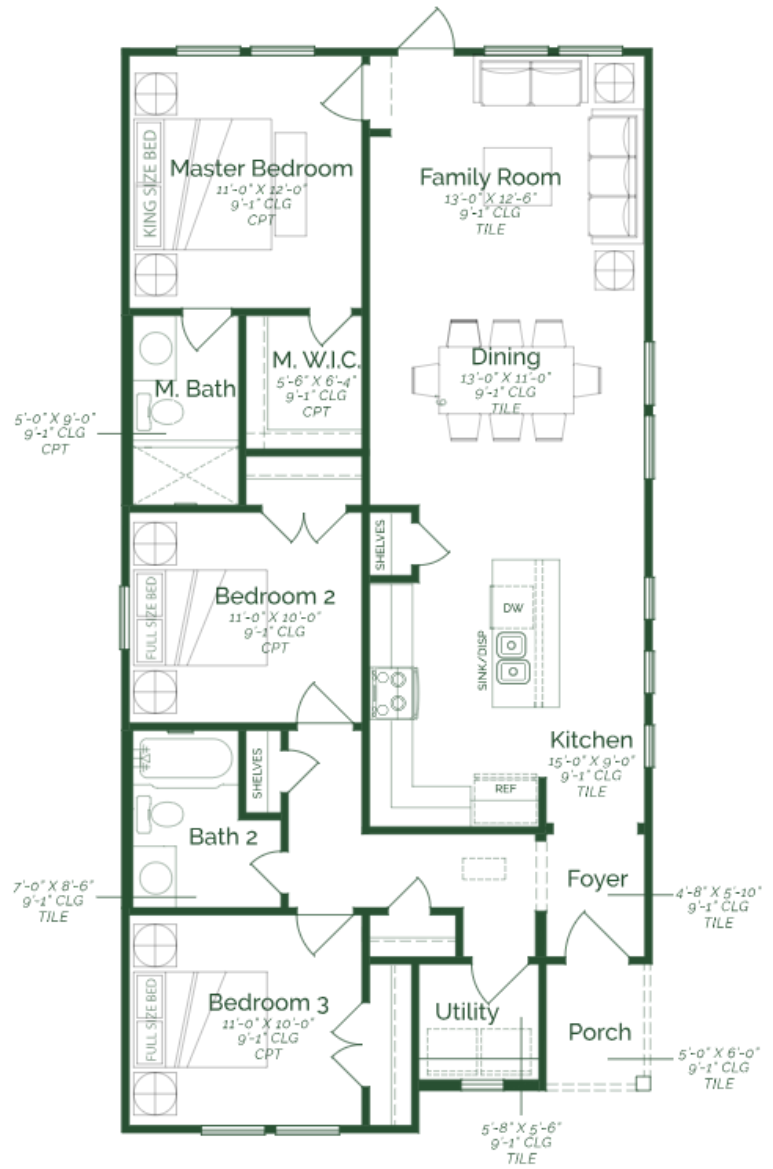
This home features three bedrooms and an open-concept layout. The spacious family room flows seamlessly into the dining area and kitchen, creating an inviting space for relaxation and entertaining. The kitchen is equipped upgraded painted pure white maple wood cabinets, ceara white granite countertops, and GE stainless steel appliances. The primary suite offers a spacious layout, a full bathroom, and a large walk-in closet. Additionally, the home includes a utility room, driftwood tile flooring throughout home and brushed nickel plumbing.

- Maple wood cabinets
- Granite countertops
- Driftwood tile flooring throughout home
- GE stainless steel appliances- Electric

*Photos do not represent the final production of the home



Bear



FIRST FLOOR