



Available Now!
\$210,990
 From \$1,613*/month

5730 St Dominic Dr
 Wolf Creek
 Homesite 28

Est. Completion Date: Available JUN/JUL 2025



1,282	1,252	3	2	1.0
TOTAL SQUARE FEET	LIVING SQUARE FEET	BEDROOMS	BATHS	STORIES

Call or Text 956-275-8069 or visit our Sales Office Monday - Saturday: 9:30am to 6:30pm Sunday: 12pm to 6pm for more info!

This home features three bedrooms and an open-concept layout. The spacious family room flows seamlessly into the dining area and kitchen, creating an inviting space for relaxation and entertaining. The kitchen is equipped with upgraded pure white maple wood cabinets, quartz countertops, and GE stainless steel appliances. The primary suite offers a spacious layout, a full bathroom, and a large walk-in closet. Additionally, the home includes a utility room, brushed nickel plumbing, and driftwood tile flooring throughout the home.

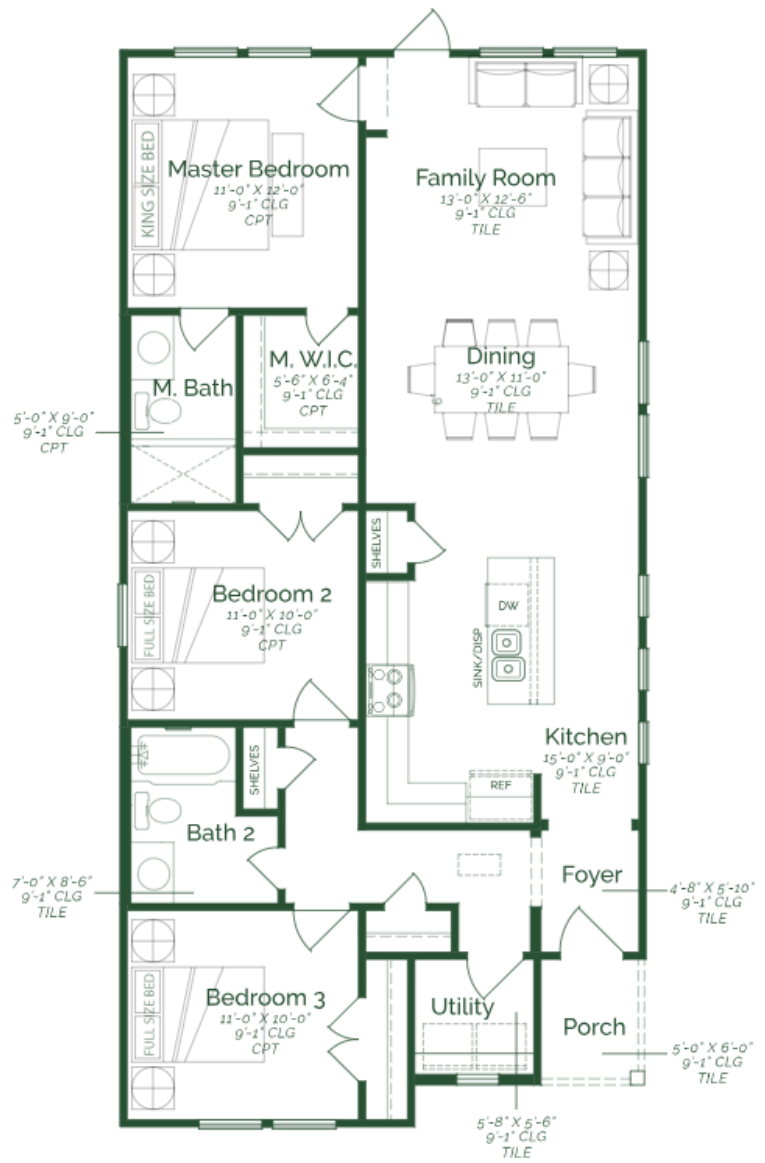
- Maple wood cabinets
- Quartz countertops
- Driftwood flooring throughout home
- GE stainless steel appliances- Electric

*Photos do not represent the final production of the home

The information provided in this document regarding available quick move-in homes at Esperanza Homes is intended for informational purposes only. While we strive to present accurate and up-to-date information, all details—including but not limited to pricing, availability, home features, and community amenities—are not guaranteed and are subject to change without prior notice. Dimensions and floor plans are approximate and may differ from the actual homes. Incentives and promotional offers are valid only when financing through Stonewood Home Lending and are subject to specific terms and conditions and may be limited to select homes and communities. For comprehensive terms, conditions, and further information regarding our homes and offerings, please consult with an Esperanza Homes sales consultant or visit esperanzahomes.com.



Bear



FIRST FLOOR